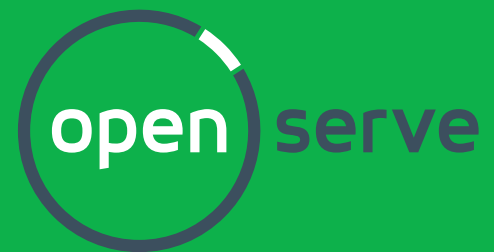


Self help and Netgear VEVG2660 setup



Internet Connection Customer Self Help Guide



Having Problems connecting to the Internet. Don't Panic. Check the following!

Check for any loose connections.

Switch off the router, wait 10 seconds, then switch it back on... Check that the Internet LED light is back on.

Restart the computer and check for internet connectivity using the browser: <https://www.google.co.za> or any other website.

Still No Connection!

In the event you still don't have internet access:
unplug all other devices e.g. fax machine except the computer and router and then repeat the previous steps.

Should you still experience service difficulties, please disconnect all equipment and proceed with the steps that follow.

How to:

Install & set up a Netgear VEVG266o router.



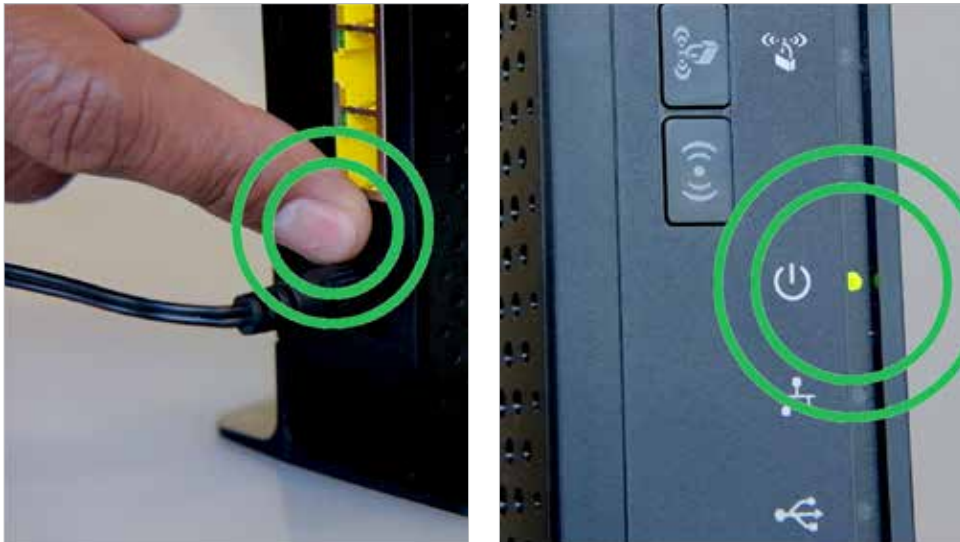
The following items are supplied in your box.



Plug the power supply into the power source.



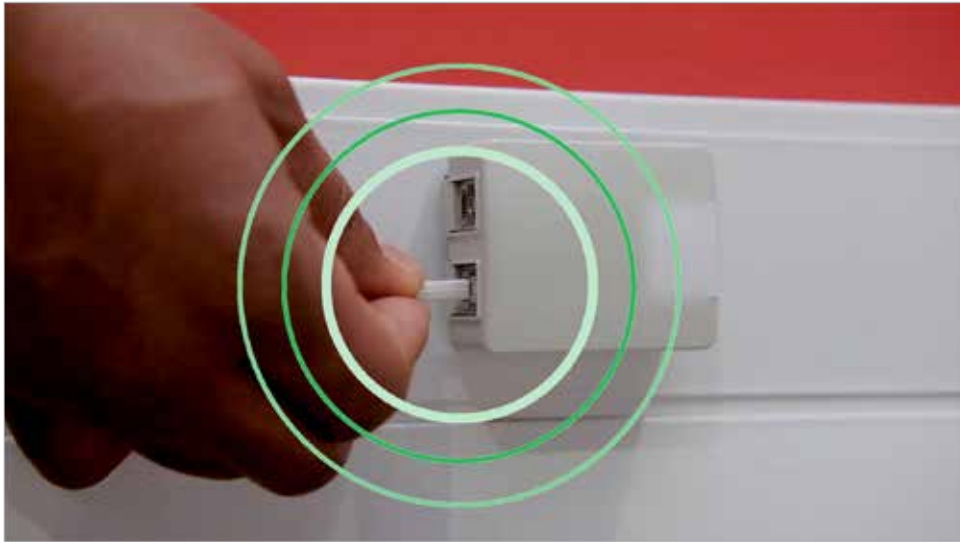
Plug the power supply cable into the router.



Turn on the router and make sure that the power light is on.



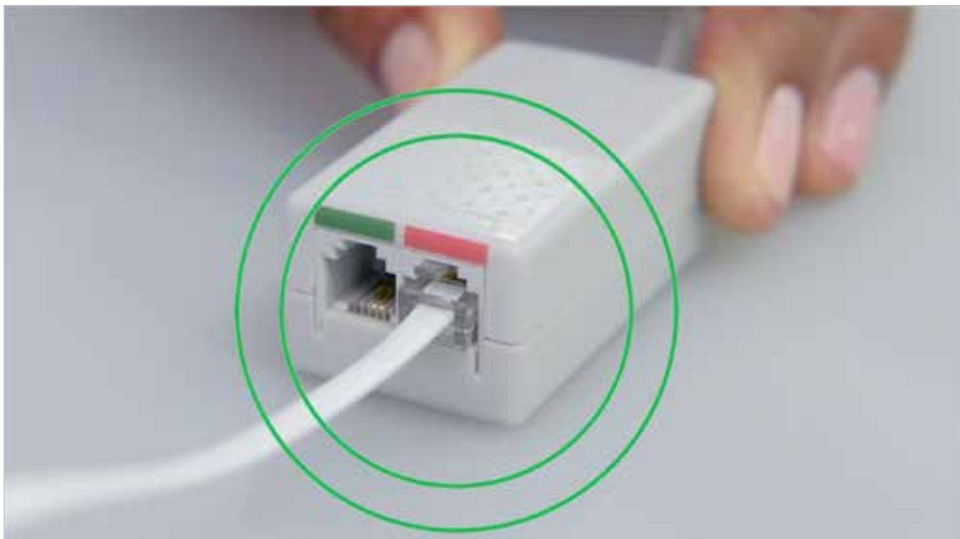
Plug a telephone cable into the line in socket on the power supply.



Plug the other end of the cable into the telephone wall socket.



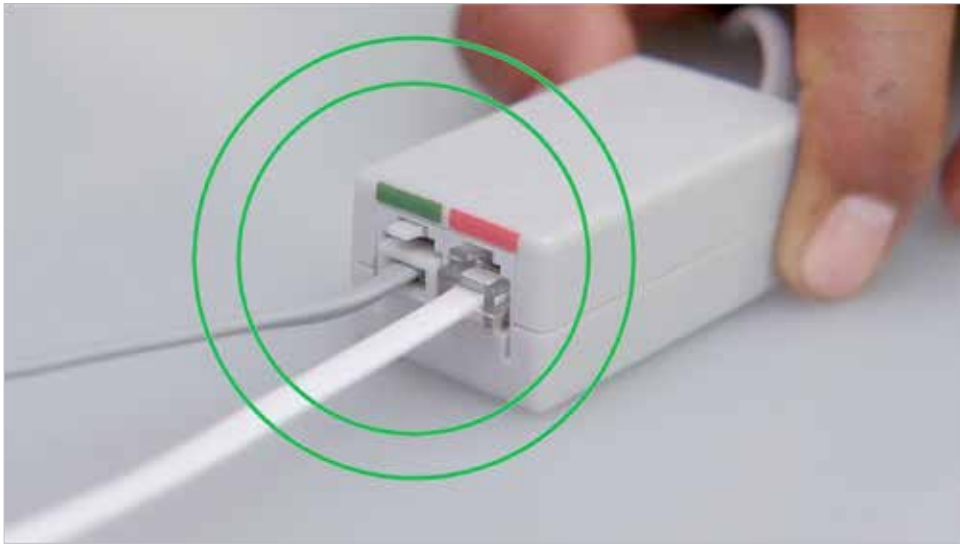
Plug the splitter into the line out socket on the power supply.



Plug a telephone cable into the red port on the splitter.



Plug the other end of the cable into the router on the port marked DSL.



Plug a telephone cable into the green port on the splitter.



Plug the other end of the cable into the telephone.



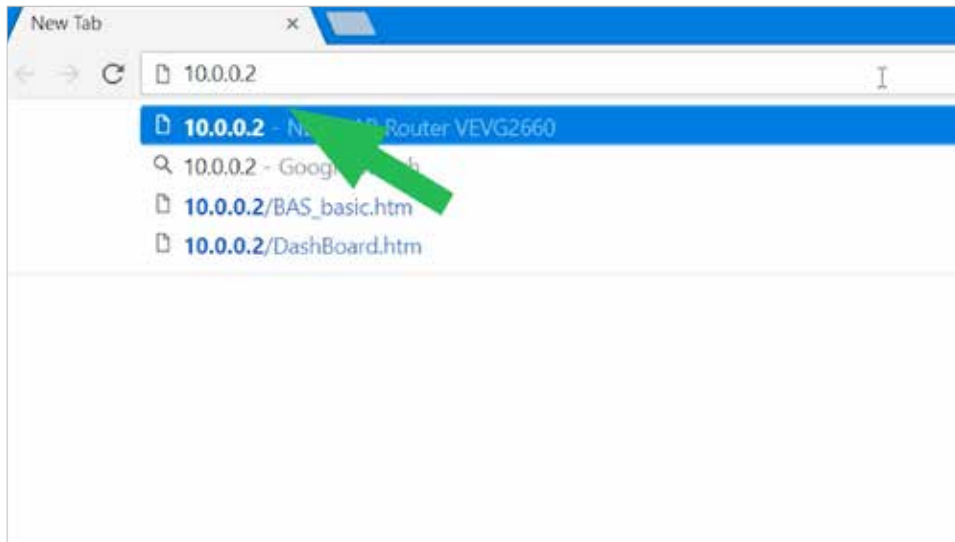
Plug a LAN cable into the first LAN port on the router.



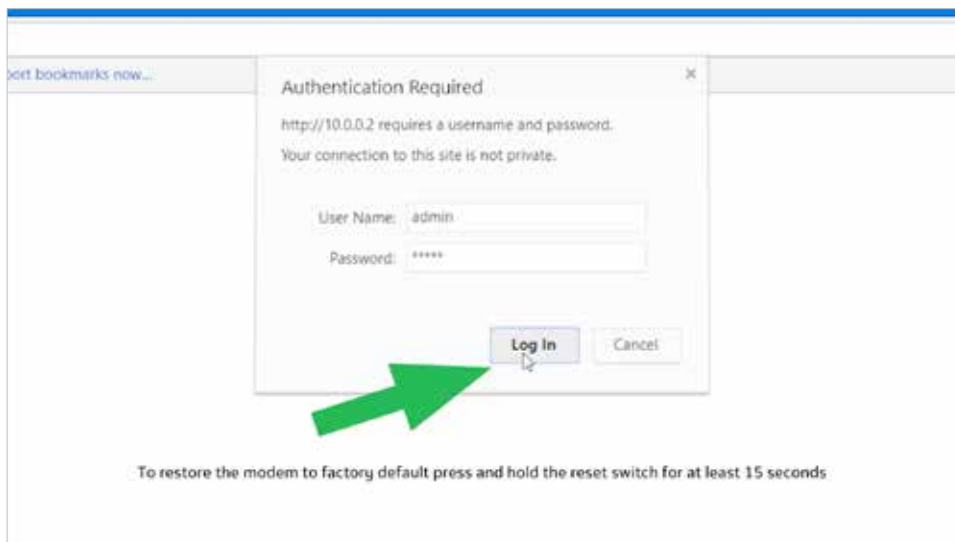
Plug the other end into a LAN port on your computer.

Setting up your internet:





Open your browser and type in your modem's IP address, such as 10.0.0.2 into the address bar and press enter.



Type in admin for both your username and password and select log in.



Click the internet icon.



Edit the existing username and password to what was supplied by your ISP and click on apply.

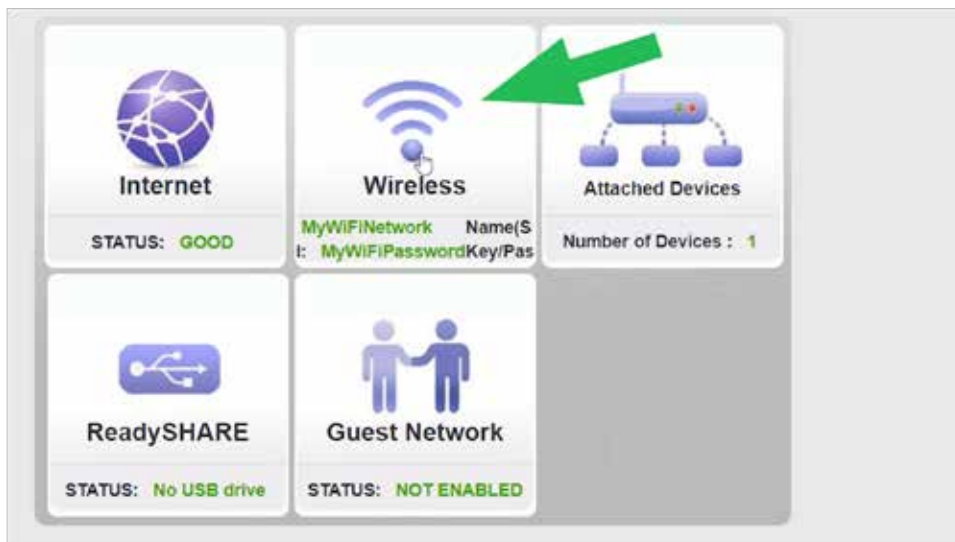


Wait for the router to save the settings.

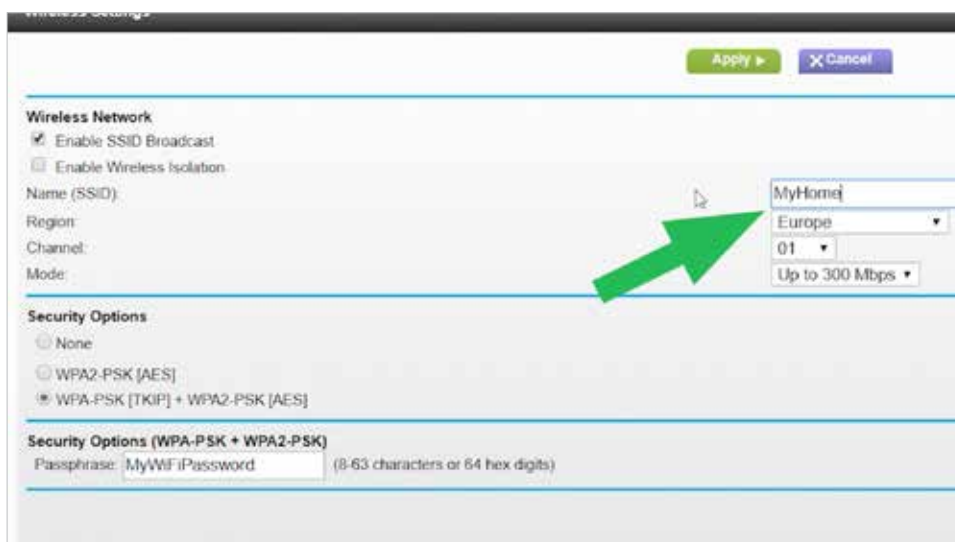


Confirm that your internet light is green, and if it is still red, repeat the previous steps or contact your ISP to verify the username and password and for further assistance.

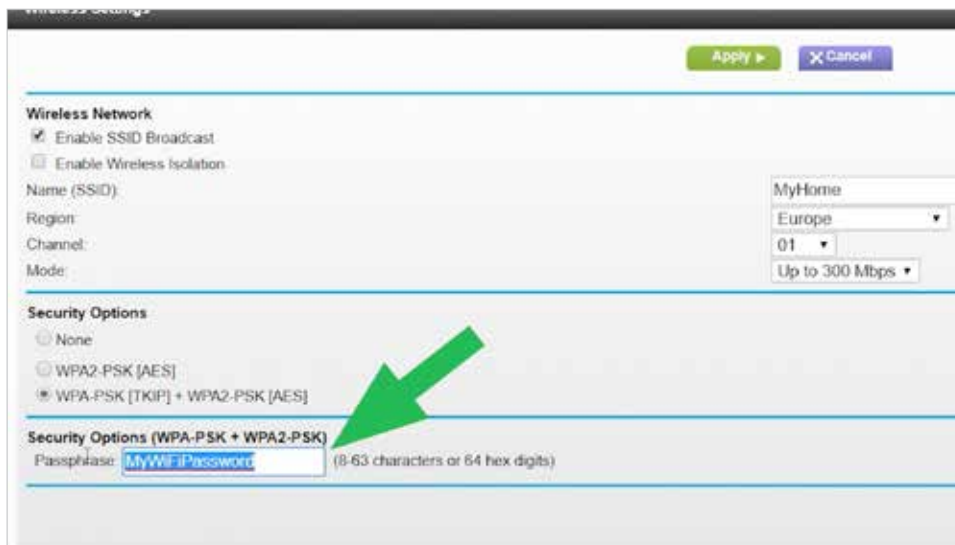
Setting up and/or verifying your WIFI:



We're almost there! Click on the wireless icon.



Rename the SSID to your preferred wireless network name.



Now edit the passphrase to your preferred Wi-Fi password.



Click on the apply button. Wait for the router to save your settings.



Now remember it is important to reconnect to the router using your new Wi-Fi user-name and password. In order to connect a device to your newly created Wi-Fi network, search for available Wi-Fi networks on your device and select the SSID that you just created and connect to it with your new password. **Thank you for using Open Serve.**



South Africa's largest telecoms infrastructure provider

www.openserve.co.za