

# Self help and Huawei F317 setup



## How to:

Install & set up a Huawei F317 Wireless Terminal.



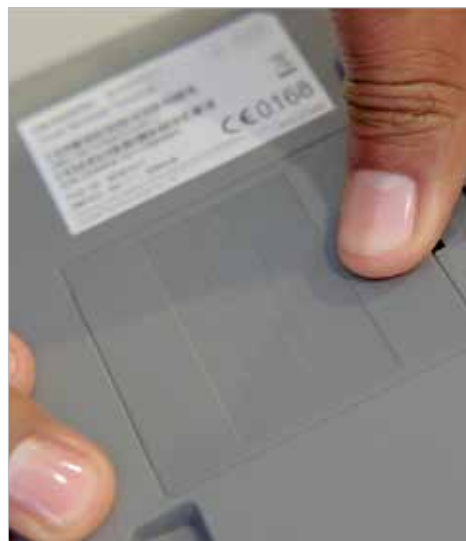
The following items are supplied in the box.



Remove the SIM and battery cover from the phone.



Insert the SIM card into the phone.



Insert the battery into the phone and replace the cover.



Connect the power supply cable to the power supply.

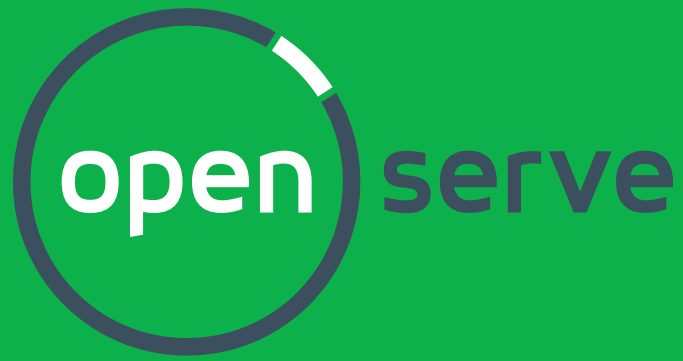


Insert the power supply into the power source and the other end of the cable into the phone.



Press and hold the power button to turn on the phone and you can now make calls.

**Thank you for using Open Serve.**



**South Africa's largest telecoms infrastructure provider**

[www.openserve.co.za](http://www.openserve.co.za)